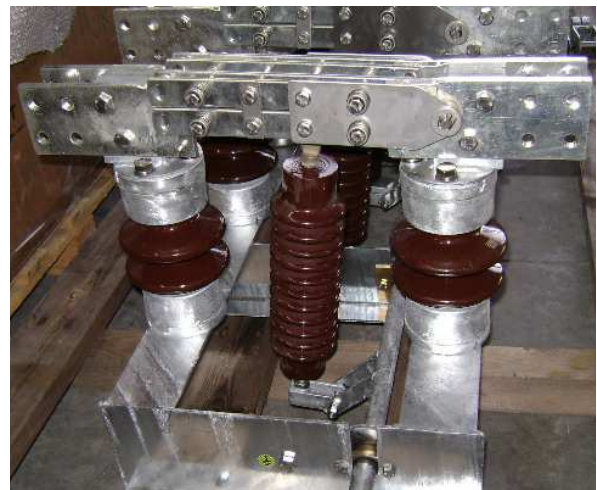
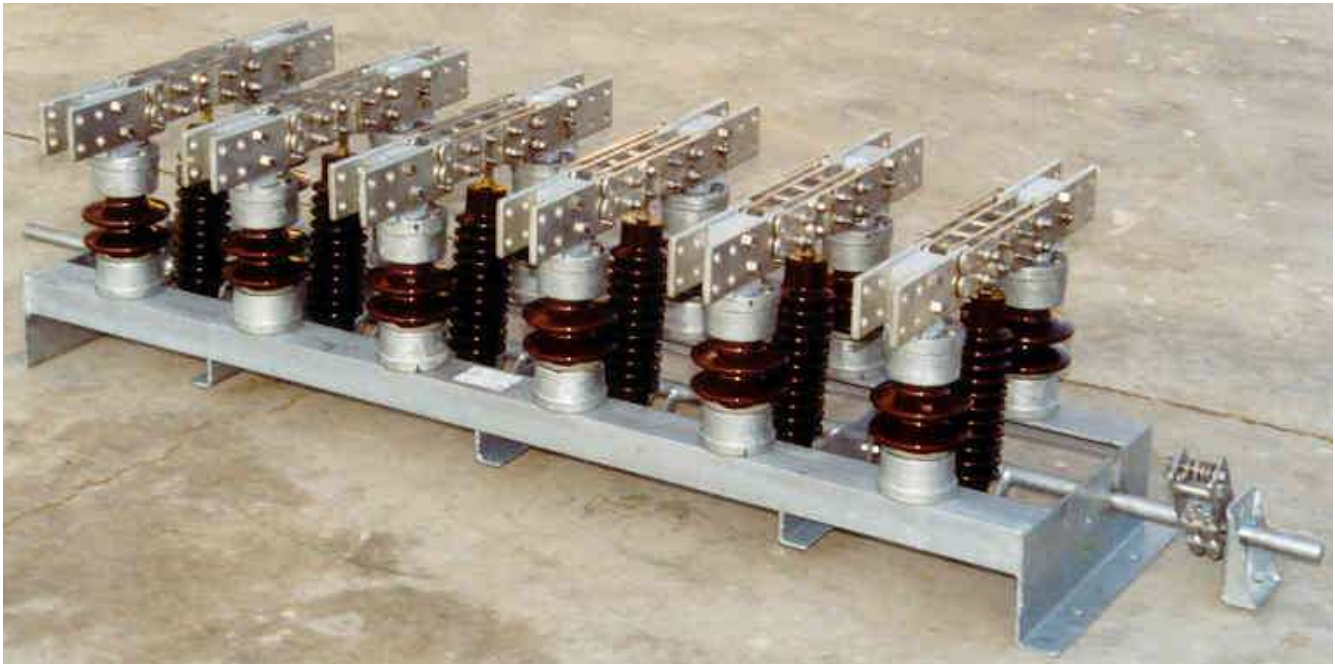


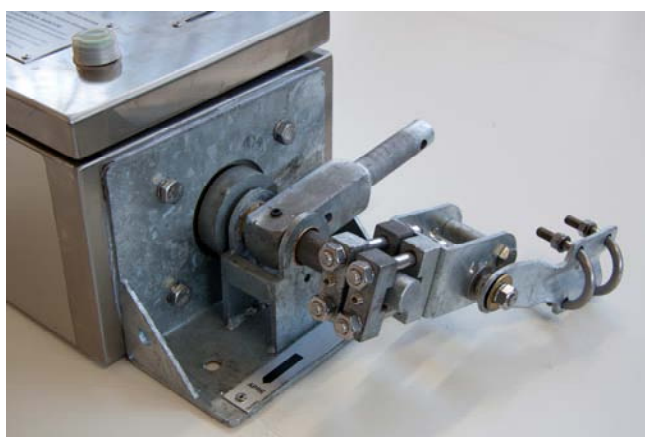
SVE 492
Sezionatore esapolare per esterno/interno 12kV
2000/2500/3000A
Hexa pole outdoor isolator 12kV 2000/2500/3000A



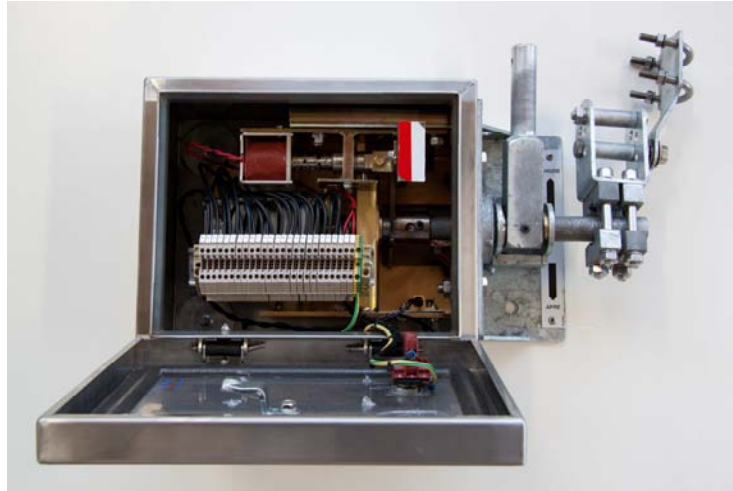
CARATTERISTICHE TECNICHE
TECHNICAL CHARACTERISTICS

Temperature di funzionamento <i>Ambient temperature</i>	[°C]	-25 ÷ +50
N° di manovre meccaniche <i>Nr. of mechanical manoeuvre</i>	/	1000
Tensione nominale <i>Rated normal voltage</i>	[kV]	12
Tensione di tenuta verso terra e tra le fasi (50-60 Hz/1 min.) <i>Rated withstand voltage toward earth and between phases (50-60 Hz/1 min.)</i>	[kV]	28
Tensione di tenuta tra i contatti aperti (50-60 Hz/1 min.) <i>Rated withstand voltage between open contacts (50-60 Hz/1 min.)</i>	[kV]	32
Tensione di tenuta ad impulso verso terra e tra le fasi <i>Impulse withstands voltage toward earth and between phases</i>	[kV]	75
Tensione di tenuta ad impulso tra i contatti aperti <i>Impulse withstands voltage between open contacts</i>	[kV]	85
Frequenza nominale <i>Rated normal frequency</i>	[Hz]	50÷60
Corrente termica nominale <i>Rated normal thermal current</i>	[A]	2000/2500/3000*
Corrente ammissibile di breve durata (1 sec.) <i>Rated admissible short-time current (1 sec.)</i>	[kA]	25

*Altre correnti su richiesta
 *Other currents on demand



SVE 492
Sezionatore esapolare per esterno/interno 12kV
2000/2500/3000A
Hexa pole outdoor isolator 12kV 2000/2500/3000A



CONFORMITÀ A NORME E SPECIFICHE
STANDARDS

Il sezionatore SVE 492 è conforme alle **norme e specifiche:**

- Internazionali IEC 60129
- Nazionali CEI 17-4
- RFI Off. T.E. nr 9767
- RFI TE12/1985 CAT. 794/370

SVE outdoor isolator comply with the following **standards:**

- International IEC 60129
- National CEI 17-4
- RFI Off. T.E. nr 9767
- RFI TE12/1985 CAT. 794/370

