



eleron

High technology and  
Italian quality since 1956

[www.eleron.it](http://www.eleron.it)

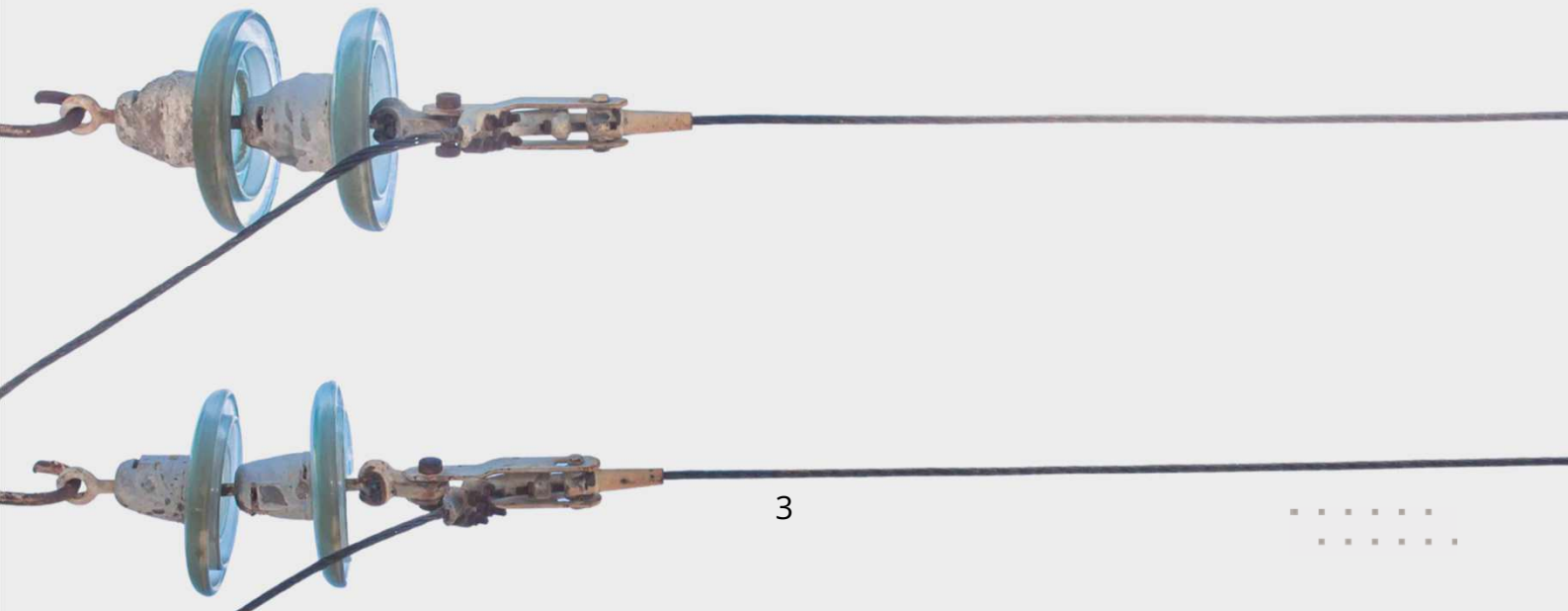
  
MADE IN ITALY



“ *Eleron Power stands for customized engineering, up-to-date technology and high quality to meet any customer need* ”

# Contents

About us .....	4
Partners .....	8
The Process .....	10
Products .....	12
Customers .....	18





# About us



## **Ad hoc solutions**

We have been operating in high, medium, and low voltage electromechanics for over 60 years.

The company has evolved over time becoming a leading company in the industry, with strategically important multinational customers.

The production process is fully developed at the headquarters in Italy and includes design, prototyping and production. We use our own internal testing room for type and routine testing.



## **Customized proposals**

We are qualified and accredited with major worldwide utilities.

We are sensitive to environmental impact, that is why our production processes are powered by over 60% renewable energy sources.

Lastly, we collaborate with a consolidated network of partners in the main American, European and Asian hubs.



# Vision

Our vision is to continue **internationally** growing and being recognized as a leading company in the supply of innovative and sustainable **customized solutions** for railway and electrical industries.

We also want to contribute with our products to a more **sustainable** future through technological innovation and, for this reason, in recent years we have particularly focused on research and development.



# Mission

Our mission is to provide **customizable, reliable** and **innovative** solutions in the electrical and railway industries.

We manufacture **high-quality products** that meet customer expectations, offering support and assistance throughout the entire process, from purchase to installation.

We strive to build long-lasting relationships with our customers, based on **trust** and the **satisfaction** of their needs.

# Milestones for over 60 years

**1956**

## **First equipment**

Development of low voltage junction and isolation boxes

**1960**

## **Disconnectors**

Development of the first models of disconnectors, switchboards and transformer stations for medium voltage

**1970**

## **Switch disconnectors**

First switch disconnector project

**2000**

## **Railway sector**

Development of solutions for rolling stock, substation and overhead line applications

**2008**

## **Foreign markets**

Opening to international markets by developing various collaborations with production companies



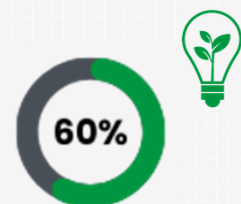
# Our values



Foreign market



Research and development



Renewable energy

## Customization

Thanks to our consolidated experience, we are able to develop new products that **fully meet the needs** of customers, **even for small quantities**. Dynamism and flexibility are our key values.

## Quality

**Quality is a MUST:** it is an essential and non-negotiable requirement for us.



Quality system



Welding system  
level CL 4



## Customer Care

Our specialized team is fully available for any needs from the early stages of the development process. We are at the forefront with remote and on-site support. **People are our added value.**

# Partners







## HEADQUARTER



Andezeno (Turin) - ITALY

Covered area sq m 2300

Offices sq m 200

Production workshop sq m 2100

External Area sq m 1700



# The process

All products are made from our own projects, developed and fully tested at our main headquarter.



## Request

We collect specific customer requests.





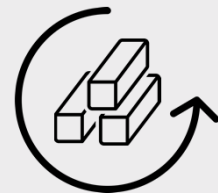
## Design & Engineering

We create customized technical-functional proposals using specific 3d softwares. We adapt our prototypes on our customer's feedback.



## Production

Our products are entirely made in our facility starting from raw materials, allowing us to produce even small quantities.



**We turn raw materials**

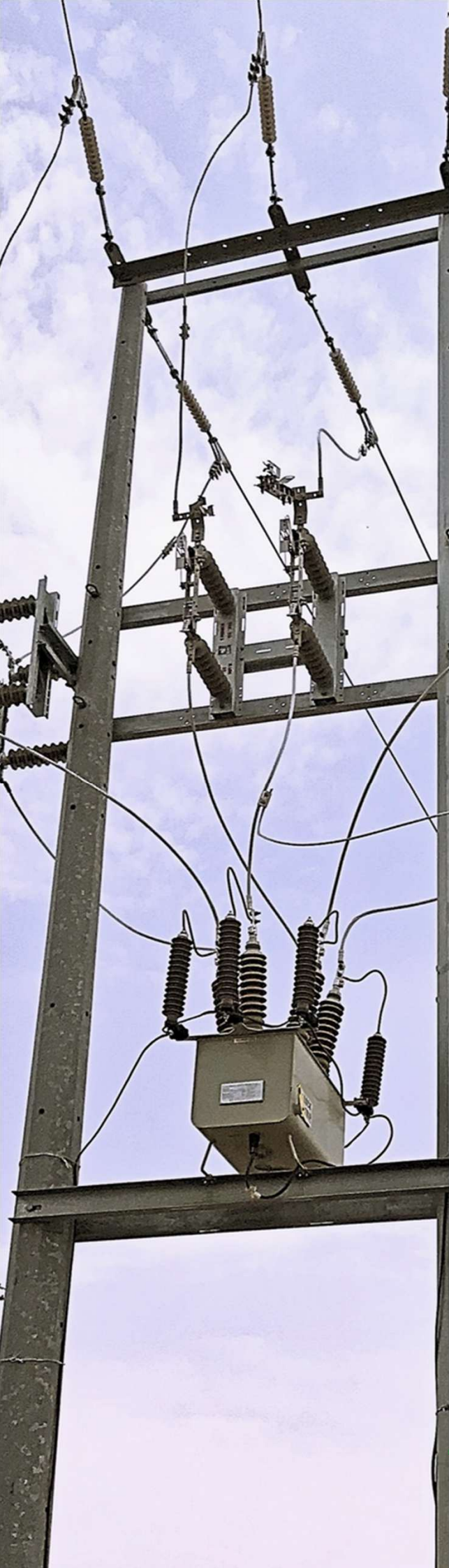


## Test

We perform all routine tests as well as some type tests in our state-of-the-art testing room that operates according to CEI/IEC 17025 standard.







# Products

## Power Distribution



➤➤➤ OHL overhead line

➤➤➤ Substation

We provide **single, double, three-poles** applications for wall or pole mounting.

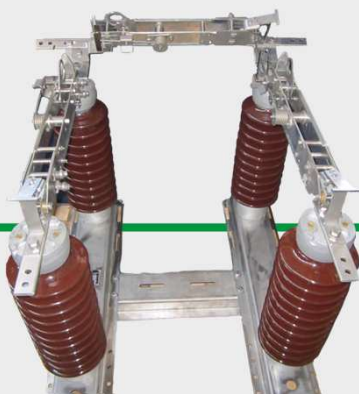
Other **disconnectors** in our production are for panel application.

A **complete range of accessories** is available such as manual devices, motorized devices, pole clamps, panels, etc.



up to 245 kV  
up to 8000 A









# Railway - INFRA



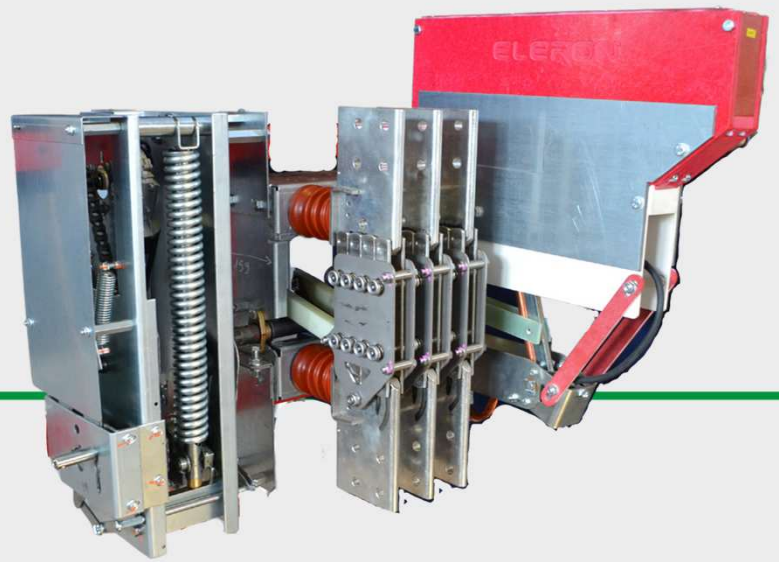
- OHL overhead line
- 3rd rail
- Substation

We produce for:

- **AC** and **DC** applications
- **ON LOAD** and **OFF LOAD** types

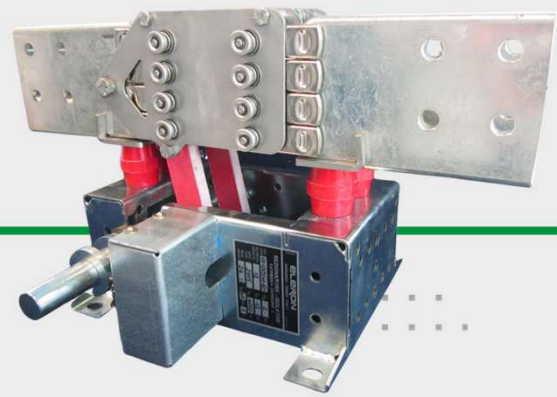
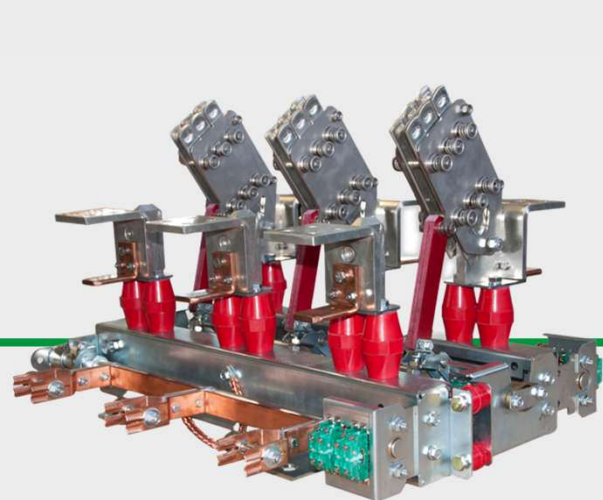
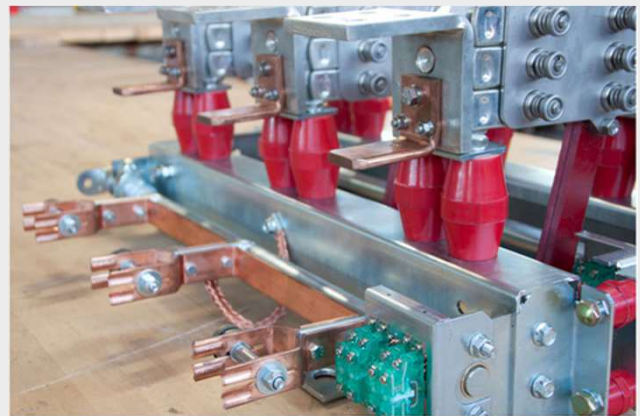
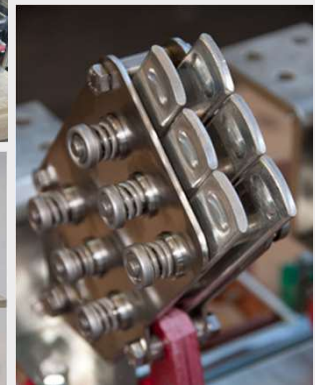
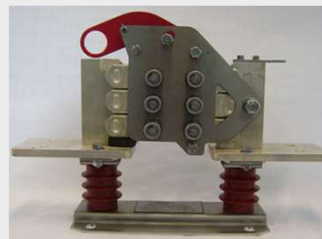
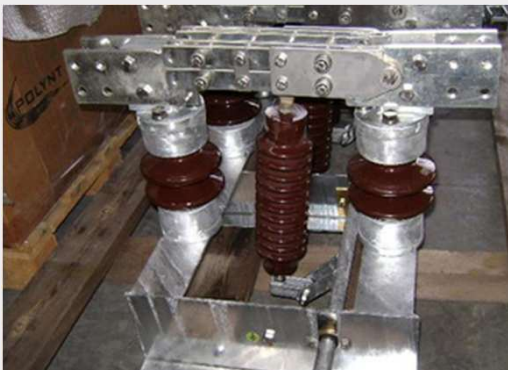
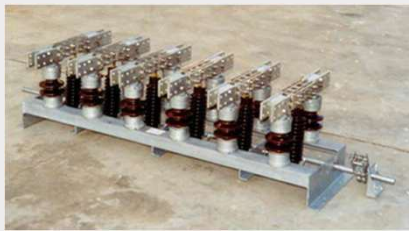


up to 25 kV AC  
or  
up to 4 kV DC  
up to 12000 A





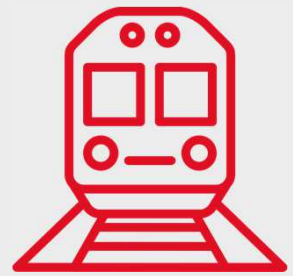
## Over 20 years of experience in the railway sector







# Railway - Rolling Stock



We provide:

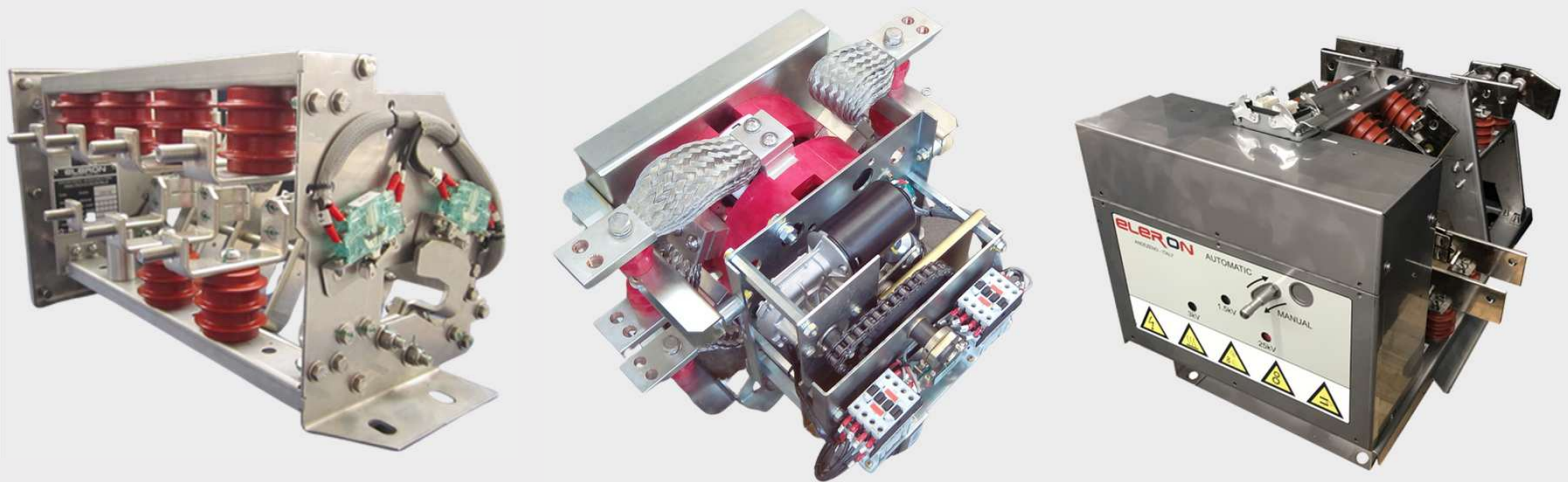
- **special disconnectors**
- **change overs**
- **earthing switches**

A complete range of accessories is available such as manual devices, motorized devices, independent devices, etc.



up to 25 kV AC  
or  
up to 4 kV DC  
up to 6000 A







# Customers

## Power Distribution






# Railway






## ELERON POWER

 Via del Tario, 6  
10020, Andezeno (TO)  
ITALY

 Tel. | Phone: +39 (0)11 9434503  
+39 392 3476738  
+39 (0)11 9434060

 E-mail: info@eleron.it

 www.eleron.it

SCAN ME

