

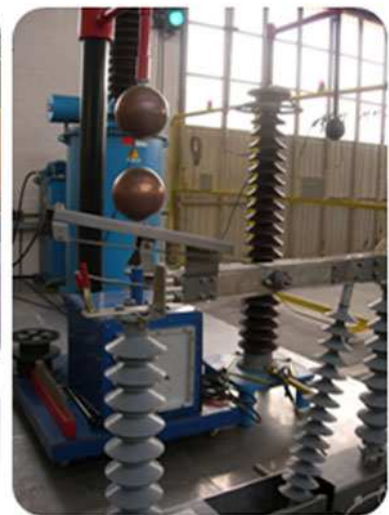
## TESTING FACILITIES

Eleron Power s.r.l. owns a testing room in the production site of Andezeno (Torino) equipped with the most modern tools for controlling electrical systems.

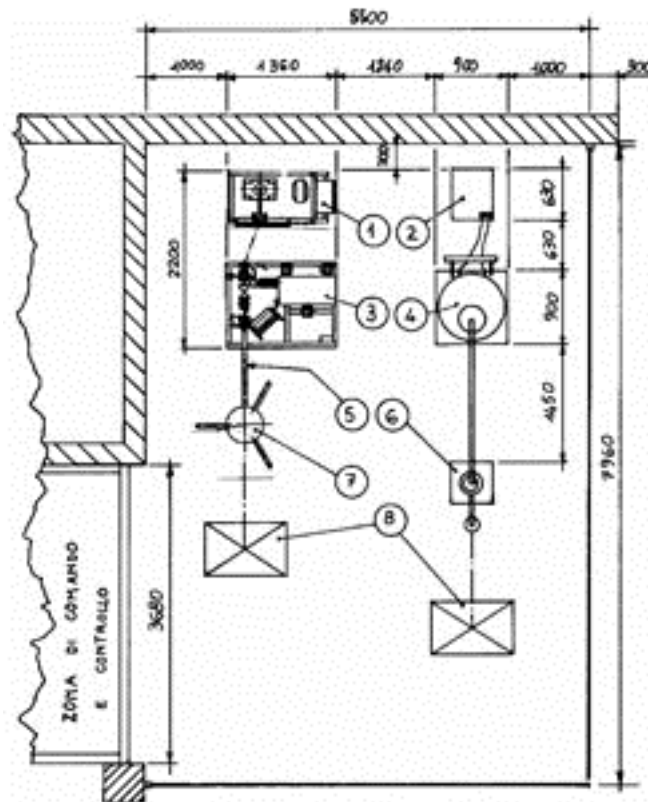
The equipment used is periodically calibrated by SIT laboratories (Calibration Service in Italy) in accordance with current regulations.

Our laboratory is tested as CEI/IEC 17025 standard and allows the following tests:

- Dielectric test up to 300 kV
- Frequency test up to 150 kV – 50 Hz
- Rising temperature test up to 3000 A
- Resistance test
- Mechanical test



## LABORATORY ARRANGEMENT



1. DC power generator 100 kV
2. Voltage variator 0 - 380 kV
3. Pulse generator GTS 300 kV
4. Lift transformer 380 - 150.000 kV
5. External face-to-face resistance
6. Ball sparkgap
7. Capacitive divider 300 kV
8. Component under test

## DESCRIPTION OF EQUIPMENT

The equipment for high voltage generation and measurement in the company includes:

- Atmospheric impulse generator, PASSIONI and VILLA models GTS 300 kV, with a nominal charge voltage of 300kV and stored energy at maximum charge voltage of 7.5 kJ (number of years 10)
- 50 Hz PIVI testing generator with nominal voltage of 150 kV and apparent nominal power of 30 kVA (number of years 10)
- BIDDLE instrument for measuring partial discharge for voltages up to 60 kV (number of years 15)
- One ball sparkgap built by ELETTROMECCANICA TIRONI with a diameter of 25 cm (number of years 15)

